

# EPIC SCREEN ACCESSORIES

## PRODUCT SPECIFICATION SHEET

### PRODUCT SPECIFICATIONS

- **CBC SHELF**

- 858mm Wide Shelf (Without Brackets)
- 270mm Shelf Depth
- 25mm Thick Melamine Shelf
- Available in White or Beech
- E1 Enviroboard, FSC Approved

Box Size: 905mm L x 320mm W x 35mm H

Weight: 8kg, Cubic Mtr. 0.01

- **SCSHELF BRACKET**

- Pair of Shelf Brackets for Use with CBC Shelf
- 30mm W x 315mm D x 315mm H
- Available in Precious Silver

Box Size: 330mm L x 70mm W x 430mm H

Weight: 3kg, Cubic Mtr. 0.01

- **SCDOC DIVIDE**

- 4 Space Document Divider
- 215mm W x 235mm D x 260mm H
- Available in Precious Silver

Box Size: 260mm L x 240mm W x 290mm H

Weight: 2.5kg, Cubic Mtr. 0.02

- **SCDOC TRAY**

- Document Tray for A4 Paper
- 235mm W x 220mm D x 265mm H
- Available in Precious Silver

Box Size: 330mm L x 250mm W x 80mm H

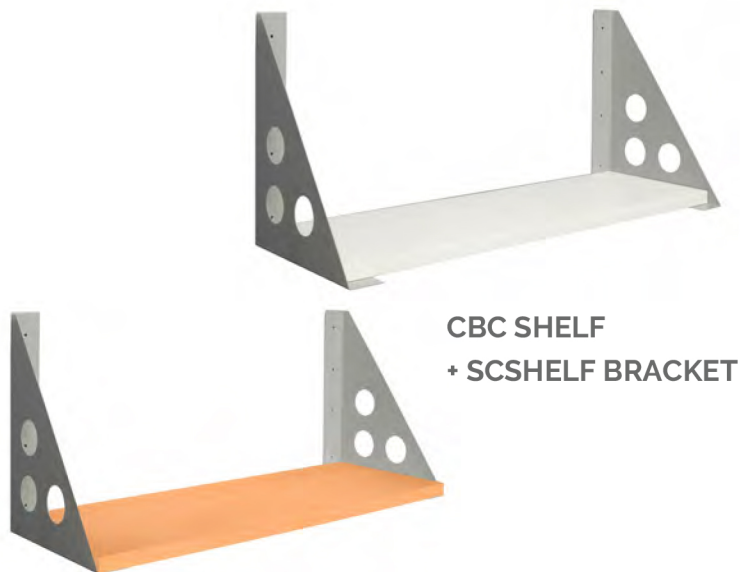
Weight: 2kg, Cubic Mtr. 0.01

- **SCFILE HOLDER**

- File Holder for A4 Foolscap or Binder Files
- 153mm W x 300mm D x 300mm H
- Available in Precious Silver

Box Size: 320mm L x 160mm W x 310mm H

Weight: 3kg, Cubic Mtr. 0.02



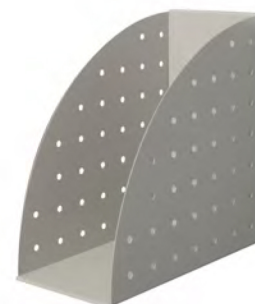
**CBC SHELF  
+ SCSHELF BRACKET**



**SCDOC DIVIDE**



**SCDOC TRAY**



**SCFILE HOLDER**

# EPIC SCREEN ACCESSORIES

## PRODUCT SPECIFICATION SHEET

### PRODUCT SPECIFICATIONS

- **SCPEN HOLDER 2**

- Double Compartment Pen Holder
- 138mm W x 70mm D x 139mm H
- Available in Precious Silver

Box Size: 160mm L x 90mm W x 140mm H

Weight: 0.3kg, Cubic Mtr. 0.01

SCPEN HOLDER 2



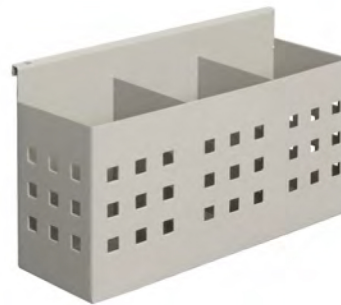
- **SCPEN HOLDER 3**

- Triple Compartment Pen Holder
- 208mm W x 70mm D x 139mm H
- Available in Precious Silver

Box Size: 220mm L x 90mm W x 130mm H

Weight: 0.4kg, Cubic Mtr. 0.01

SCPEN HOLDER 3



- **WALL S**

- Wall Starter Bracket to Attach Screen to Wall
- 35mm W x 55mm D x 40mm H
- Available in Precious Silver

Box Size: 35mm L x 55mm W x 40mm H

Weight: 0.5kg, Cubic Mtr. 0.01

WALL S



- **RS FOOT**

- Pair of Freestanding Feet for Screens
- 300mm W x 1000mm D x 220mm H
- Available in Precious Silver

Box Size: 510mm L x 50mm W x 170mm H

Weight: 4.5kg, Cubic Mtr. 0.01

RS FOOT



### WARRANTY

- 5 Year Warranty



**EPIC OFFICE**  
furniture.com.au