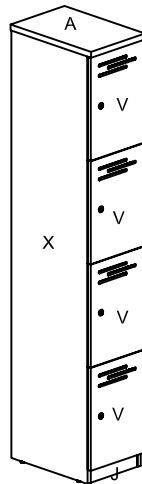
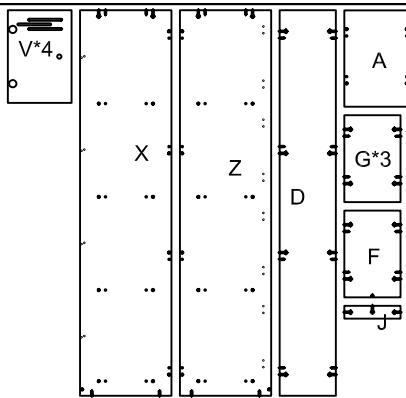


# Assembly Instructions

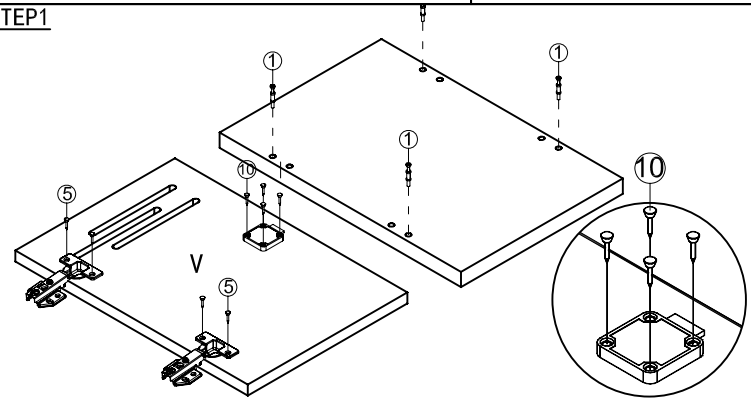
MODEL NO:WRML-305/4



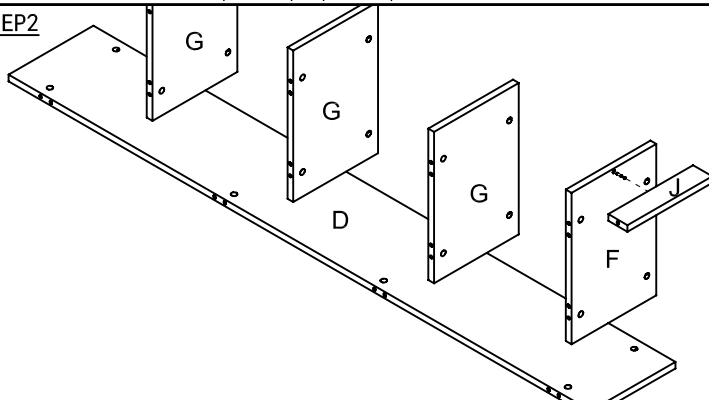
Pin 6-35 31PCS 1	ADJ. Feet ø18×51 4PCS 6
Cam 31PCS 2	Lock 4PCS 7
Cam Cover 31PCS 3	Lock Catcher 4PCS 8
Hinge (full-overlay) 8PCS 4	Wood Screw 3.5×13 8PCS 9
Wood Screw 4×16 48PCS 5	Wood Screw 4×20 16PCS 10



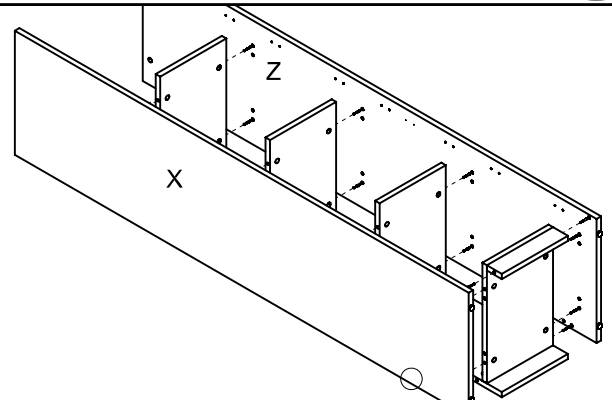
STEP1



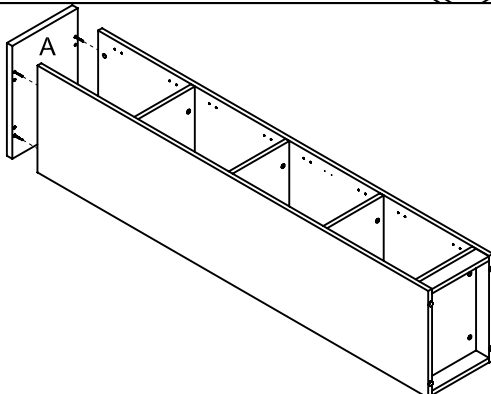
STEP2



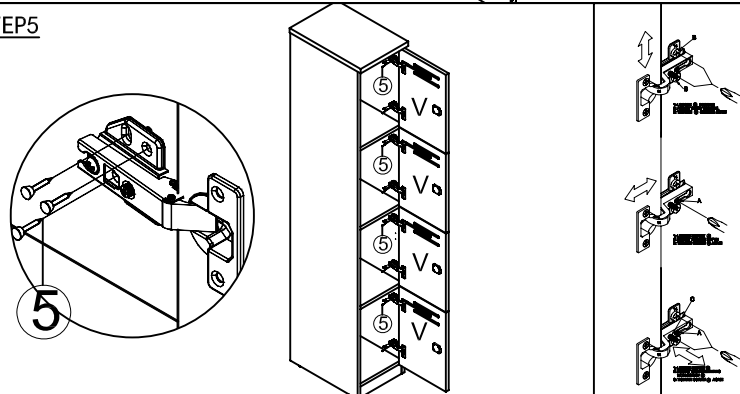
STEP3



STEP4



STEP5



## IMPORTANT NOTE:

- Place all laminated parts on a clean and smooth surface such as a rug or carpet to avoid the parts from being scratched.
- Check to be sure that you have all parts and hardware.
- Remove all wrapping materials, including staples & packing straps before you start to assemble.
- Don't tighten all screws/bolts until all completely assembled.
- Keep all hardware parts out of reach of children

