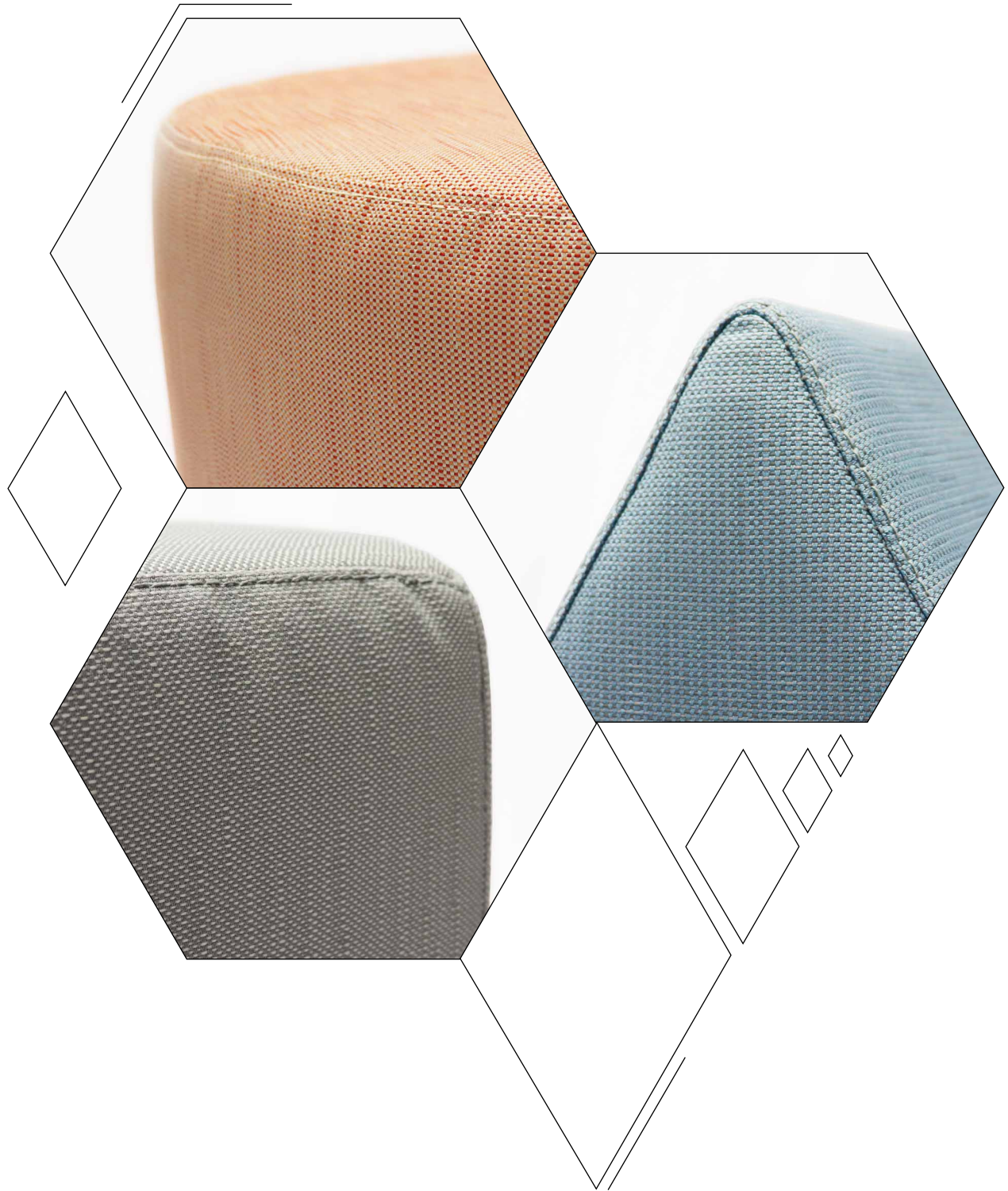


Optional Fabric Upholstery Range



EPIC OFFICE
furniture.com.au



The success of the Epic Office Furniture range range has been built on offering commercial quality products delivered quickly, in a limited range of finishes.

We can now provide an extended range of fabric choices for a selection of our office chairs.

These products are still available in the existing express fabrics, but can also be locally upholstered with our house fabric range.

There is a manufacturing lead time involved in upholstering these products in, so please contact us if you have any questions regarding delivery to your area.



CONTENTS

Fabric Choices - Page 5

Mesh Chairs :

Motion Chair - Page 6

Gesture Chair - Page 7

Lumi Chair - Page 8

Ergo Task Chair - Page 9

Typo Chair - Page 10

Kal Task Chair - Page 11

Hartley Task Chair - Page 12

Hartley Visitor Chair - Page 13

Zoom Chair - Page 14

Operator Chairs :

Verona - Page 15

View Chair - Page 16

Morris Chair - Page 17

Visitor Chairs :

Cantilever Chair - Page 18

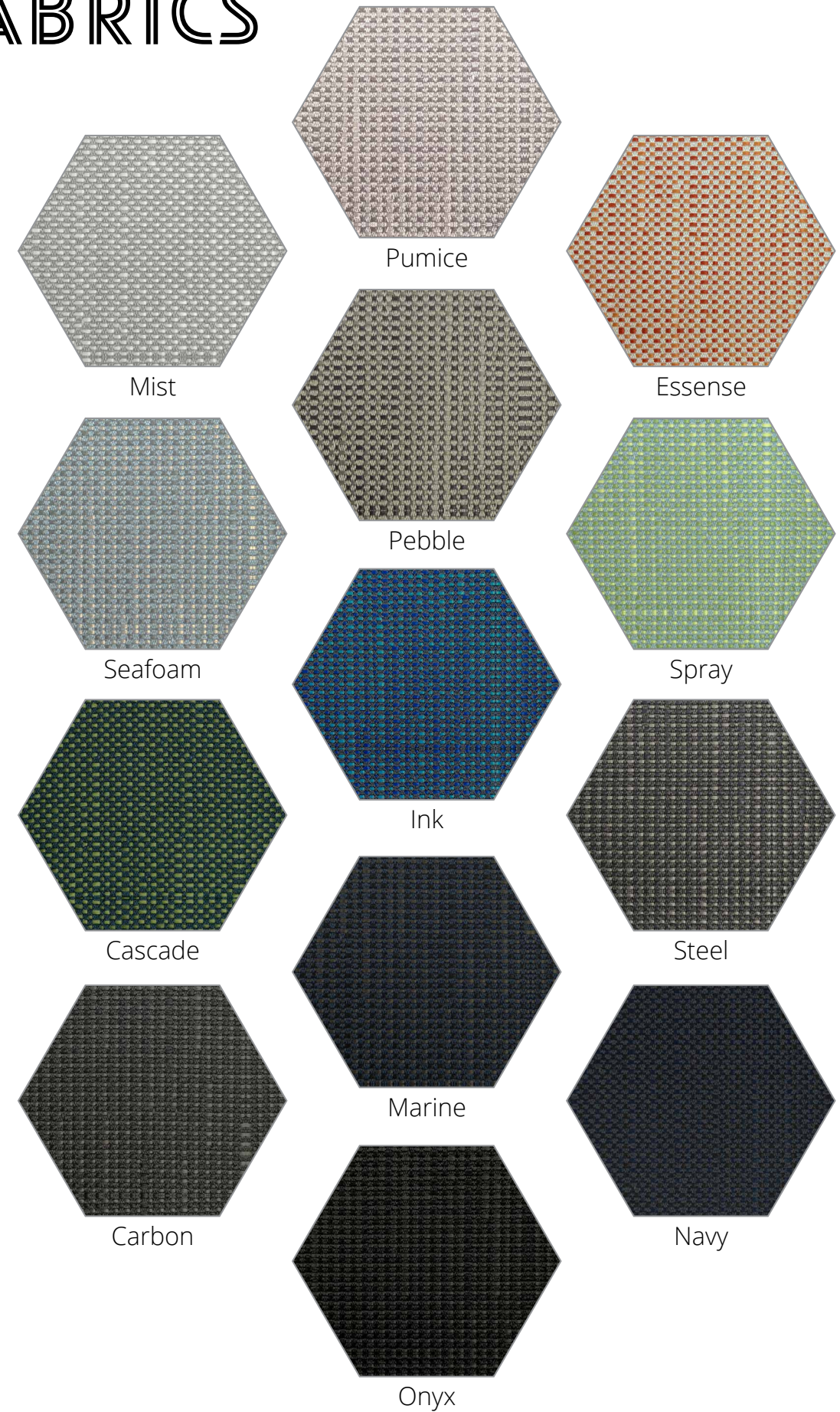
Laura Chair - Page 19

Wimbledon - Page 20

Ottomans :

Mars Ottomans - Page 21

IN-HOUSE FABRICS



MOTION CHAIR

The Motion chair has gas lift with a 21 degree back tilt angle with 3 locking positions, and 3D adjustable arm rests.

Featuring a Donati-dopo weight sensitive mechanism with 6 position seat slide and concealed lumbar cushion.

Featuring both BIFMA and GREENGUARD Gold Certification and a generous 135kg weight rating.

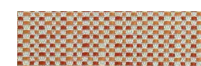


Dimensions

- Back Height : 520mm
- Seat Width : 520mm
- Seat Depth : 510mm
- Gas Height : 440-530mm

Fabric Finish

- Essence



GESTURE CHAIR

High quality mesh task or executive arm chair. Synchronised back rest and seat allow for adjusting position to suit task, while seat slide and lumbar support the back and legs. 130kg weight rating.

The seat is upholstered in light grey fabric as standard, Bifma and Greenguard approved and backed by a 10 year warranty.

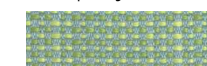


Dimensions

- Back Height : 505mm
- Seat Width : 480mm
- Seat Depth : 520mm
- Gas Height : 450-540mm

Fabric Finish

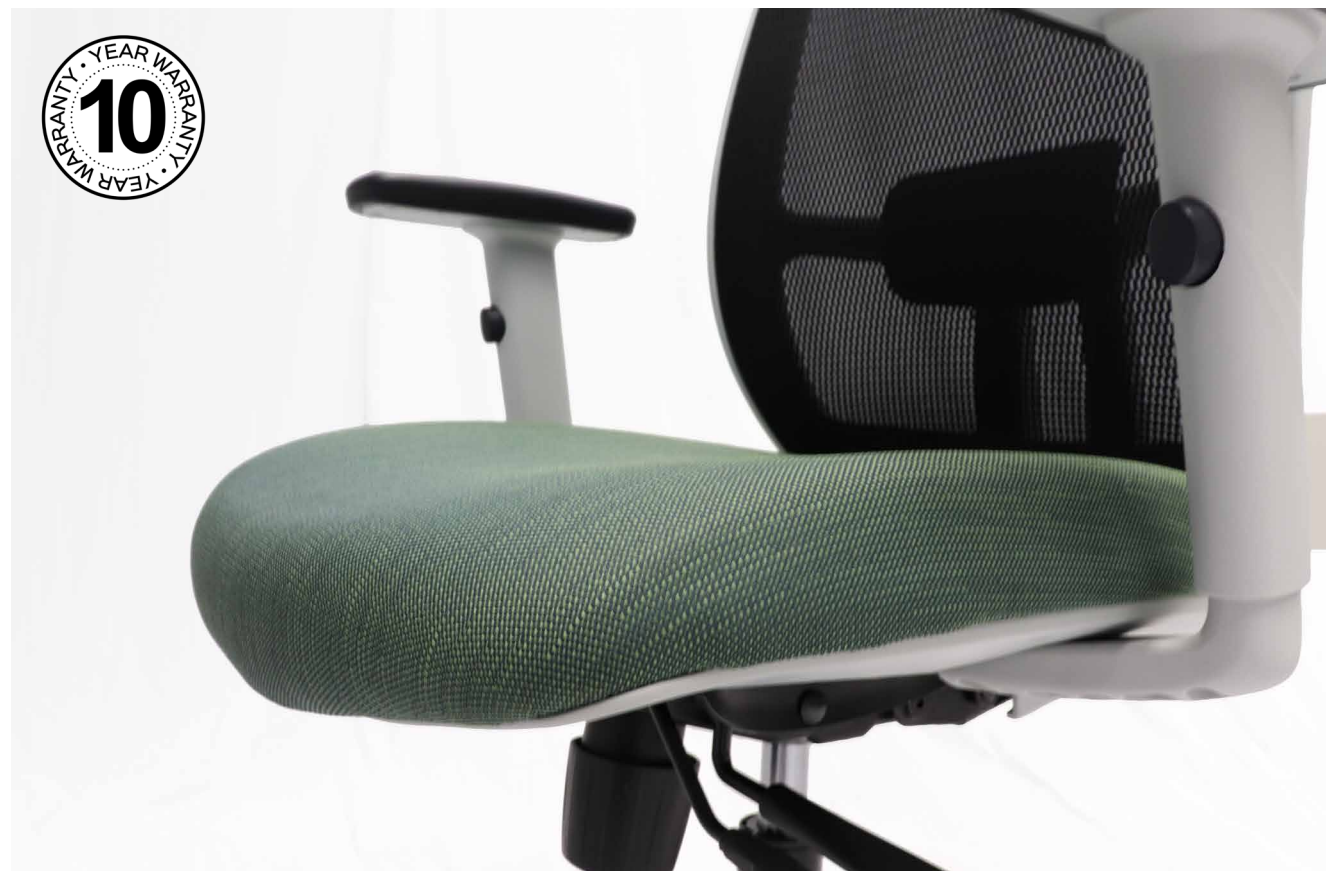
- Spray



LUMI CHAIR

The Luminous executive mesh chair is the perfect chair for the busy executive. The Luminous has a modern stylish look with a mesh back and white arm rests and base.

Suited to all tasks with a synchro mechanism to allow exact seat and back position setting and adjustable arms, with a generous size upholstered seat and breathable mesh back for ultimate executive comfort.



Dimensions

- Back Height : 510mm
- Seat Width : 480mm
- Seat Depth : 545mm
- Gas Height : 420-510mm

Fabric Finish

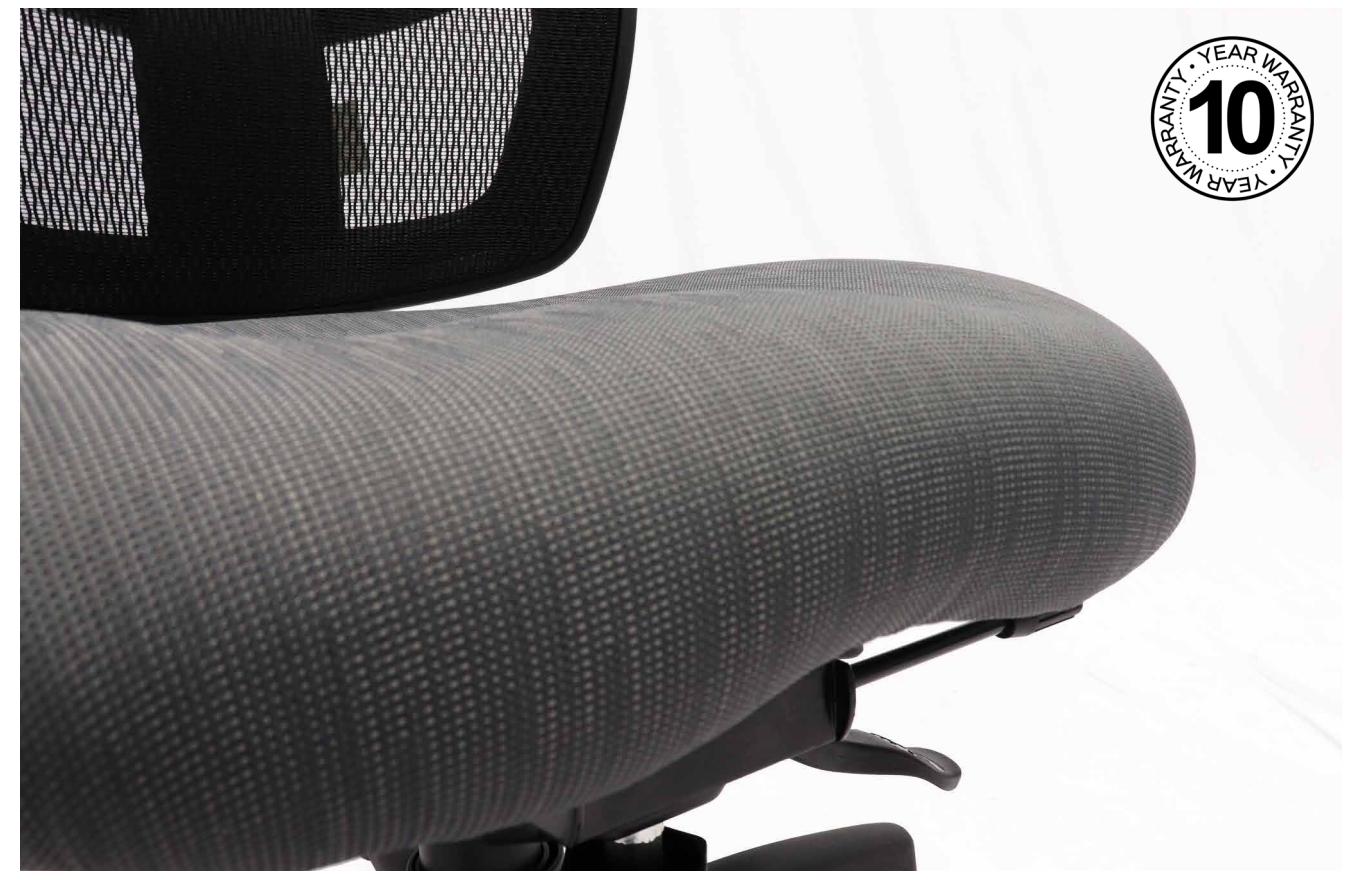
- Cascade



ERGO TASK CHAIR

The Ergo task comes with a full set of adjustments to assist in supporting you in a full range of tasks. Suited to heavy duty use with seat slide for extra seat depth and ratchet back for extra back height and a fully ergonomic mechanism for seat and back adjustment.

AFRDI and BIFMA tested with Green Guard Gold certification backed by a 10 year warranty.



Dimensions

- Back Height : 500mm
- Back Width : 500mm
- Seat Width : 520mm
- Seat Depth : 490mm
- Gas Height : 450-540mm

Fabric Finish

- Steel



TYPO CHAIR

Ever popular fully ergonomic mesh back task chair. With good size mesh back, moulded foam seat available in fabric or PU for easy cleaning. Adjustable arms an optional extra. 110kg Weight Rating

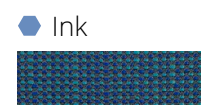
Backed by a 5 year warranty.



Dimensions

- Back Height : 460mm
- Back Width : 435mm
- Seat Width : 490mm
- Seat Depth : 440mm
- Gas Height : 460-590mm

Fabric Finish



KAL TASK CHAIR

Executive high back mesh chair with lumbar support for extra comfort, with optional head rest. The synchro mechanism allows for adjustment to suit different tasks and comes with adjustable arms. 135kg Weight Rating.

Bifma tested with Green Guard certification backed by a 10 year warranty.



Dimensions

- Back Height : 585mm
- Back Width : 445mm
- Seat Width : 500mm
- Seat Depth : 510mm
- Gas Height : 430-520mm

Fabric Finish



HARTLEY TASK CHAIR

Stylish ergonomic task chair, with mesh back and adjustable arms. The synchro mechanism allows the chair to move with you as you change tasks.



Bifma tested with Green Guard Gold certification backed by a 10 year warranty.



Dimensions

- Back Height : 490mm
- Back Width : 500mm
- Seat Width : 500mm
- Seat Depth : 480mm
- Gas Height : 440-520mm

Fabric Finish

- Spray



HARTLEY VISITOR CHAIR

Mesh back visitor chair with ample seat and back size and adjustable arms, with modern black cantilever base. Ideal visitor chair to go with any mesh back desk chair or use as meeting chair.



GreenGuard approved and Bifma tested backed by a 10 year warranty



Dimensions

- Back Height : 485mm
- Back Width : 480mm
- Seat Width : 510mm
- Seat Depth : 480mm
- Seat Height : 440mm

Fabric Finish

- Pebble

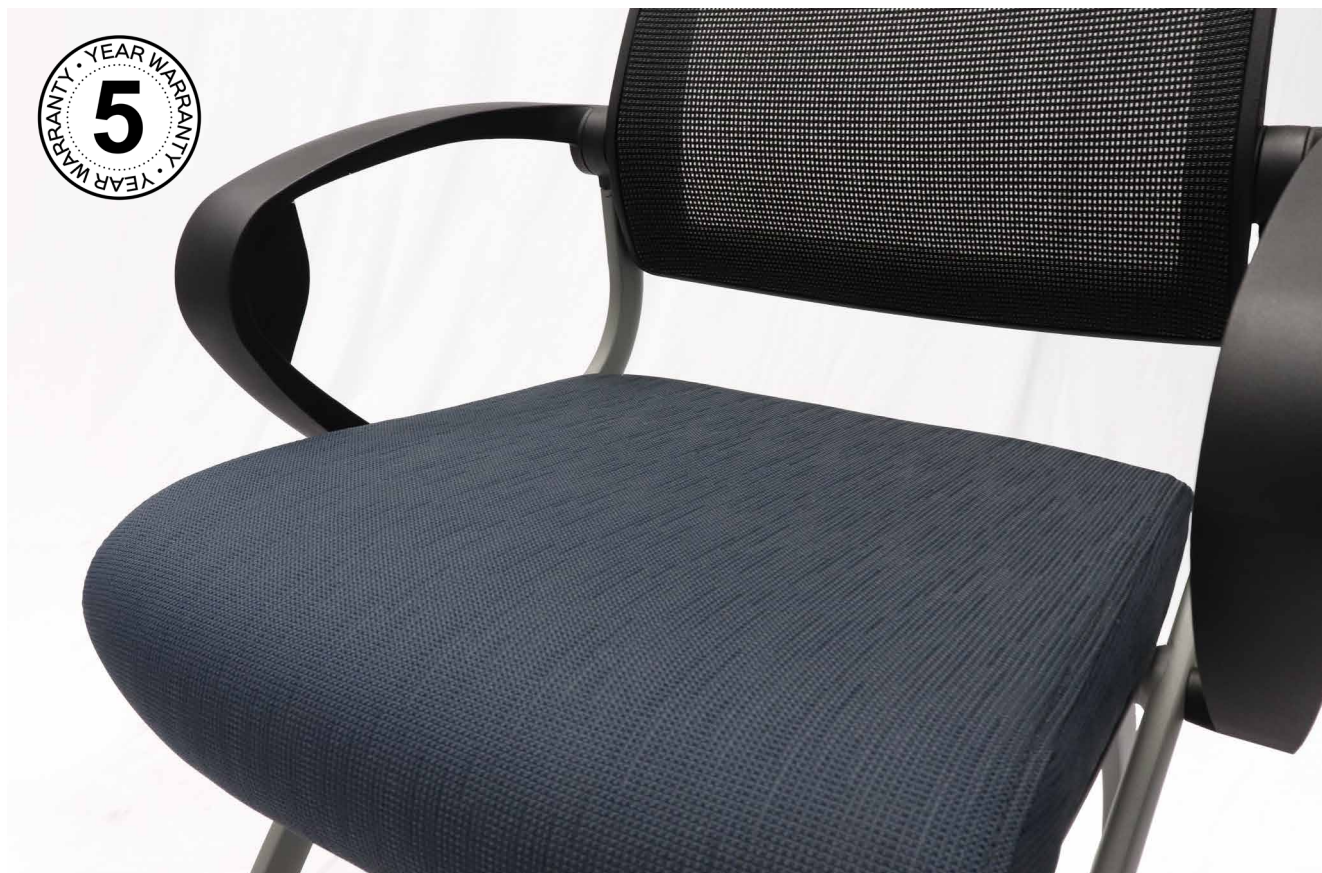


ZOOM CHAIR

Ideal solution for training applications. Slimline design, mesh back training chair with adjustable back rest angle and arms.

Comes on castors for easy moving and is foldable for easy storage when not in use. The foldable tablet arm is an optional extra.

GreenGuard Gold certification and backed by a 5 year warranty.



Dimensions

- Back Height : 330mm
- Seat Width : 460mm
- Seat Depth : 490mm
- Seat Height : 490mm
- Overall Height : 885mm

Fabric Finish

- Marine



VERONA CHAIR

Task chair designed for heavy commercial use. Comes with good size oval back and injection moulded seat, and has independent seat and back tilt.

Upholstered in fabric, AFRDI approved and backed by a 10 year warranty.



Dimensions

- Back Height : 530mm
- Back Width : 450mm
- Seat Width : 520mm
- Seat Depth : 480mm
- Gas Height : 480-620mm

Fabric Finish

- Onyx

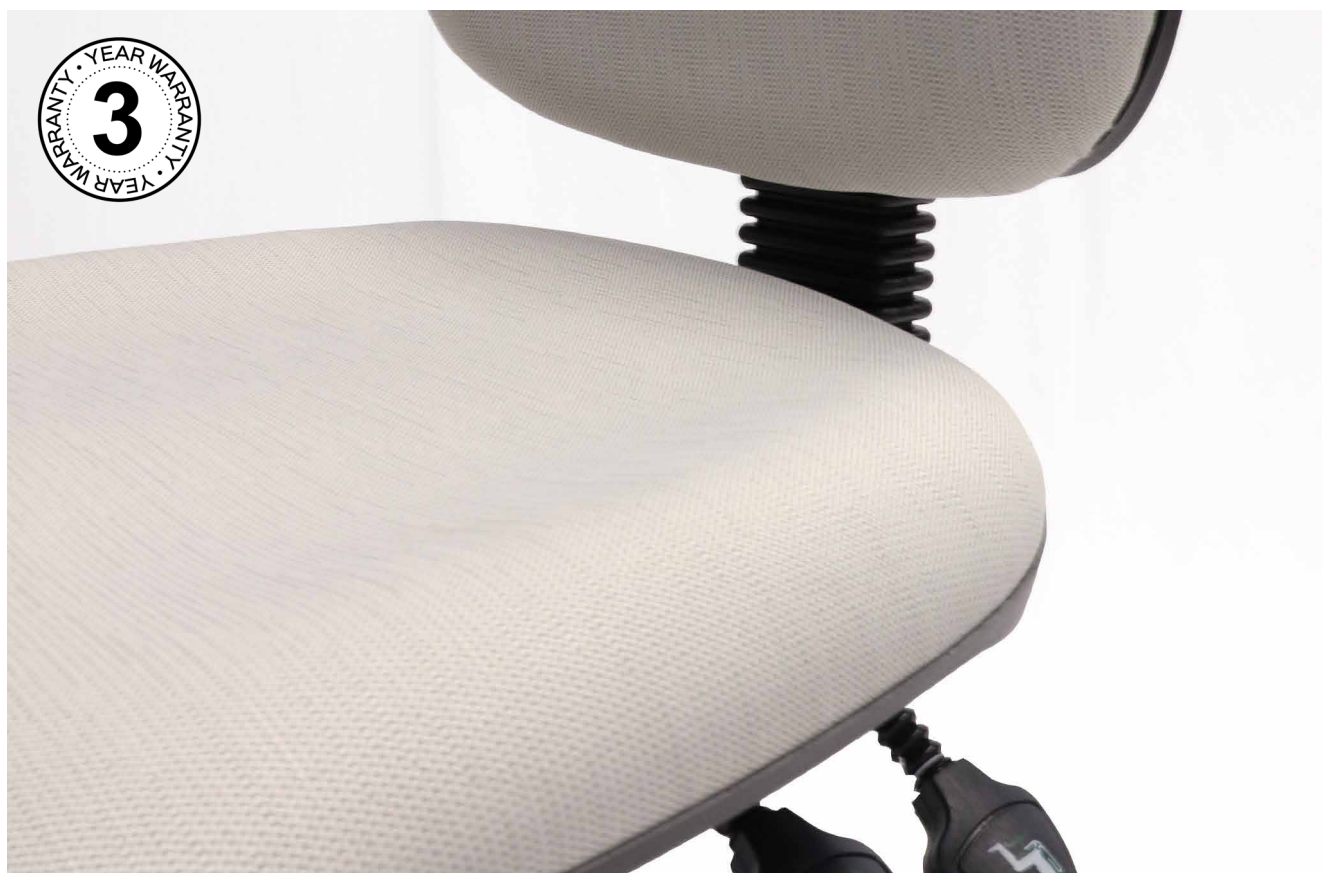


VIEW CHAIR

Task chair designed for commercial use. Comes with standard size back and injection moulded seat, and has independent seat and back tilt.



Upholstered in fabric, AFRDI approved and backed by a 3 year warranty.



Dimensions

- Back Height : 430mm
- Back Width : 440mm
- Seat Depth : 450mm
- Seat Width : 500mm
- Gas Height : 470-600mm

Fabric Finish

- Pumice



MORRIS CHAIR

Ideal seat for user requiring a large chair with full adjustment. Comes with a heavy duty mechanism and independent back and seat adjustment.



Upholstered in fabric or PU, AFRDI approved and backed by a 10 year warranty.



Dimensions

- Back Height : 535mm
- Seat Depth : 510mm
- Seat Width : 530mm
- Gas Height : 490-590mm

Fabric Finish

- Pebble

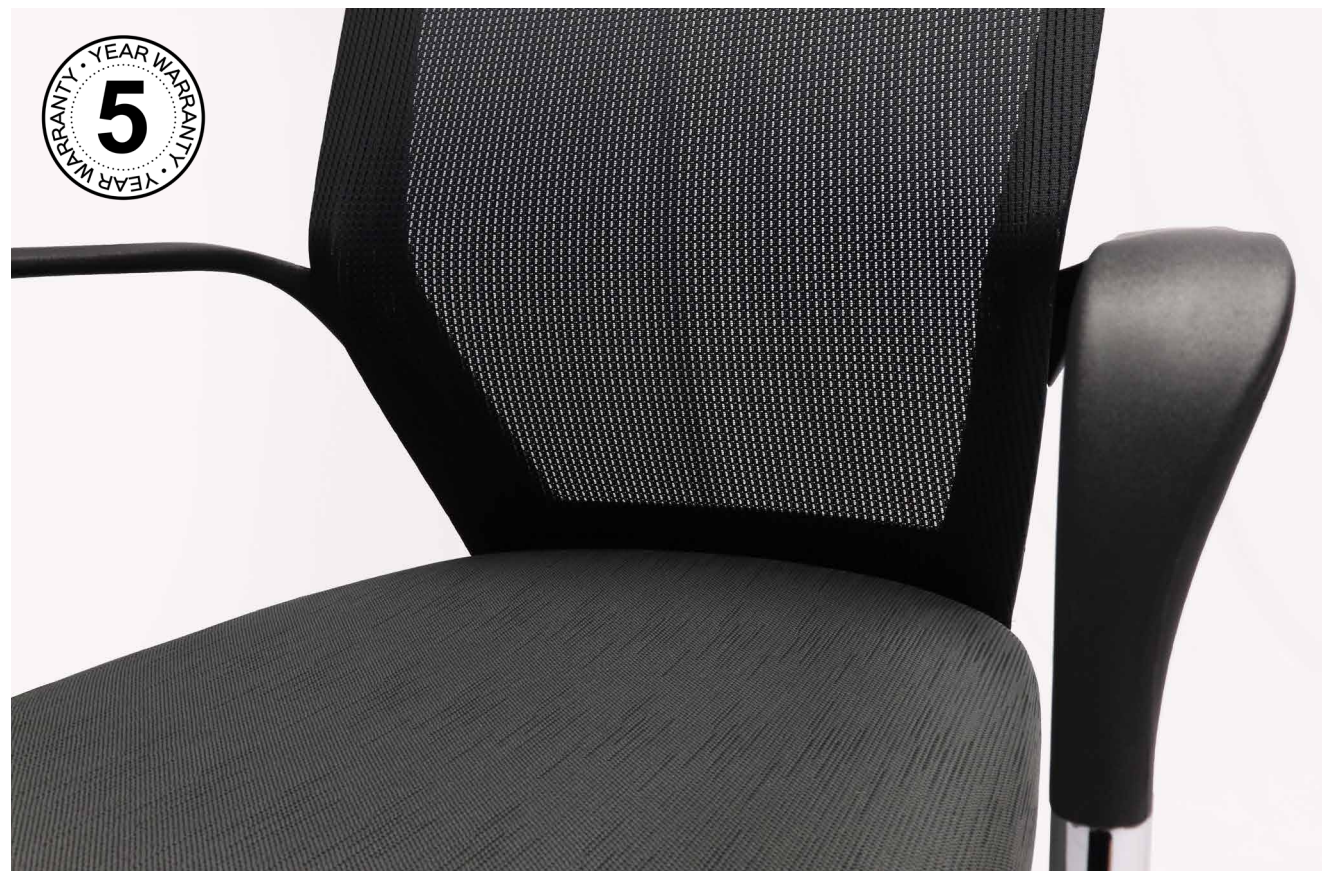


CANTILEVER CHAIR

Stylish designed mesh back visitor or meeting chair. Featuring a chrome cantilever frame and arms with fabric seat.

This stackable visitor chair has a 120kg weight rating.

Backed by a 5 year warranty.



Dimensions

- Back Height : 500mm
- Back Width : 450mm
- Seat Width : 470mm
- Seat Depth : 470mm
- Seat Height : 440mm

Fabric Finish

- Carbon



LAURA CHAIR

Ideal for a visitor or meeting chair. Robust design with 4 chrome legs and arms, good size mesh back and fabric seat.

Weight rating of 120kgs.

Backed by a 5 year warranty.



Dimensions

- Back Height : 480mm
- Back Width : 435mm
- Seat Width : 480mm
- Seat Depth : 480mm
- Seat Height : 480mm

Fabric Finish

- Navy



WIMBLEDON CHAIR

Very versatile chair with black plastic perforated back and waterfall seat and chrome steel rod sled base. The chair stacks and links and has options for a fabric seat or back pad, tablet arm and can be moved with a trolley.

Bifma tested and backed by a 3 year warranty



Dimensions

- Back Height : 245mm
- Seat Width : 425mm
- Seat Depth : 430mm
- Seat Height : 445mm
- Overall Height : 755mm

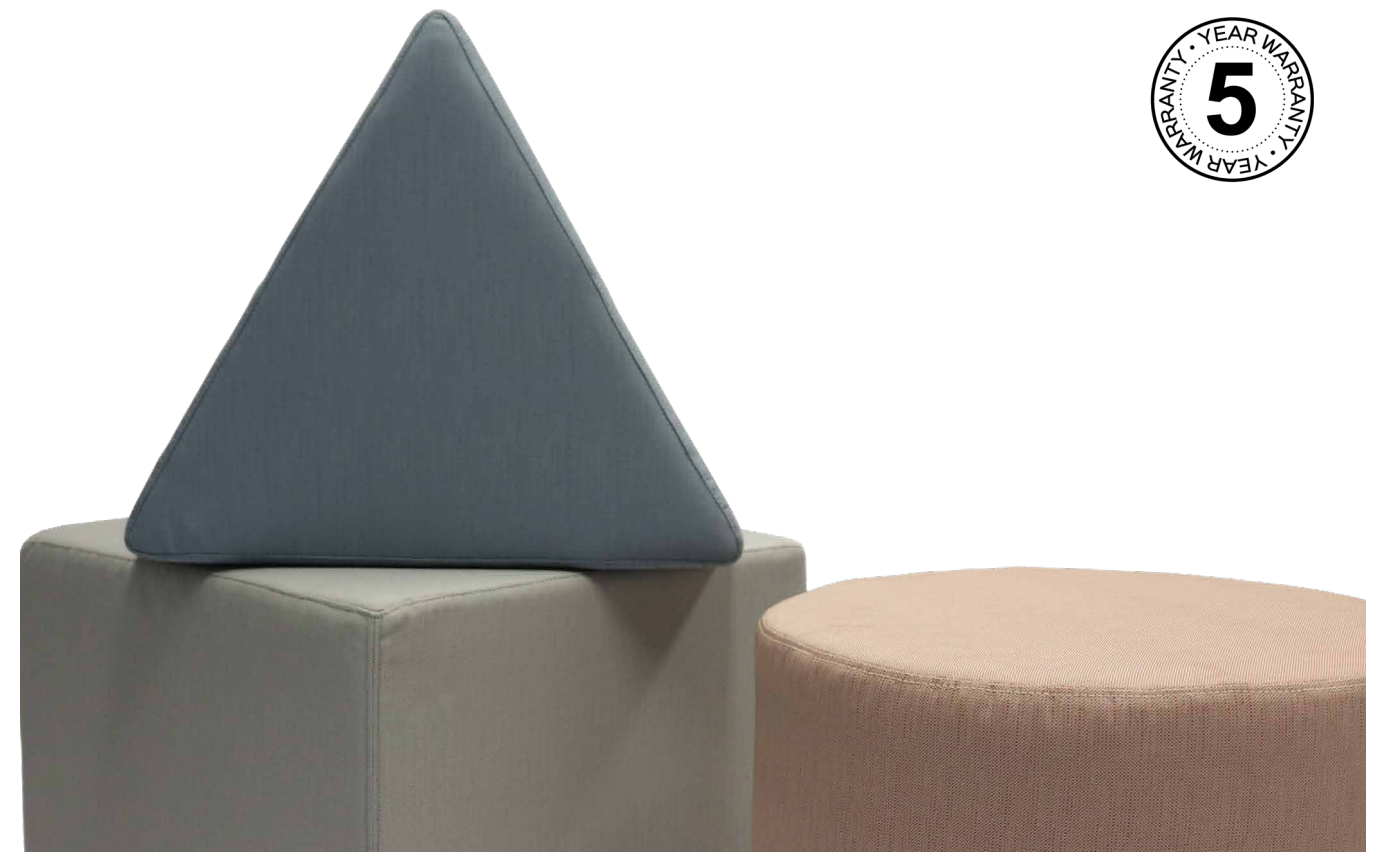
Fabric Finish



MARS OTTOMAN

Use in reception, break out areas or as an occasional visitor seat. Available in 3 shapes, Square, Triangle and Round. Create a visually welcoming sitting space with a range of shapes and colours.

Backed by a 5 year warranty.



Dimensions

- Mars S Height : 450mm
- Mars S Width : 550mm
- Mars S Depth : 550mm
- Mars T Height : 450mm
- Mars T Sides : 550mm
- Mars R Height : 450mm
- Mars R Diameter : 550mm

Fabric Finishes



Mars S

Mars T

Mars R

