

BOOST+

Height Adjustable Workstation Range

CONTENTS

3	Features
4-5	Single Sided Workstations
6-7	Back to Back Workstations
8-9	Corner Workstations
10-13	Add Ons
14-17	Component Breakdown

Boost+ Workstation Range

The BOOST+ is a new and improved range which now comes with the below features:

- Dual motor with 3 stage motorised legs
- 120kg weight lifting capacity on the Workstations and 140kg capacity on the Corner Desks
- Smooth & quiet adjustment at 38mm per second
- LED digital controller with 3 pre-set programmable heights and easy to use up & down arrows
- Anti-collision and anti-tilt safety features
- Optional Portable Battery Packs allows desk mobility free from GPOs
- Height range of 620mm - 1270mm H to meet the new Australian Standard
- 750mm depth top with scalloped cable access
- Adjustable levelling feet
- Keypad safety lock and reminder alarm setting
- Low noise emissions
- Easy assembly
- A range of sizes and colours to suit your needs
- Optional Bluetooth control to work with your smart mobile devices
- A selection of cable tidying options

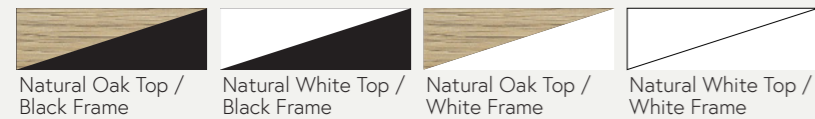
NEW

Now AFRDI Certified



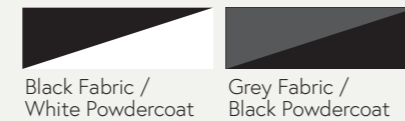
Boost+ Workstation

- Dual motor - 3 stage motorised legs
- 120kg weight lifting capacity
- Smooth & quiet adjustment at 38mm per second
- Digital controller with 3 programmable heights
- Anti-collision and anti-tilt safety features
- Optional Portable Battery Packs allows desk mobility free from GPOs
- Height range of 620mm - 1270mm H
- 750mm depth top with scalloped cable access
- Available in 1200mm, 1500mm or 1800mm wide
- Available colours -



Boost+ Workstation with Screen

- All of the features of the Boost+ Workstation
- 900mm H x 30mm T pinnable privacy screen
- Screens in Black Fabric with White powdercoat extrusion or Grey Fabric with Black extrusion
- Available in 1200mm, 1500mm or 1800mm wide to suit Boost+ Workstations
- Available in other screen heights. Ask us today.



Boost+ Workstation with Cable Tray

- All of the features of the Boost+ Workstation
- Fully ducted cable tray with punchout for power & data to be fitted to either external or internal of frame
- Optional cable snake and bridge upgrades available to manage power and data cords to keep your workspace safe and tidy.
- Available in Black or White to match the workstation frame
- Available in 1200mm, 1500mm or 1800mm wide to suit Boost+ Workstations



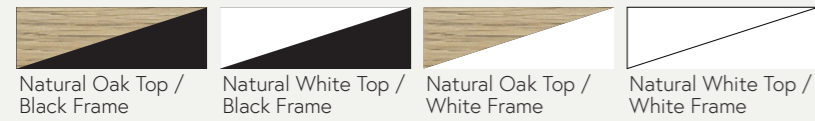
Boost+ Workstation with Screen & Cable Tray

- All of the features of the Boost+ Workstation
- Including pinnable privacy screen
- Clearance from Floor to bottom of screen: 425mm
- Including cable tray
- Internal Segregation For Power & Data



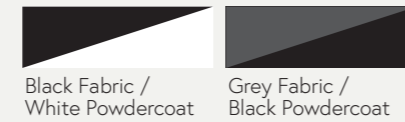
Boost+ Back to Back

- Suits 2 users with independent height adjustment
- Dual motor - 3 stage motorised legs
- 120kg weight lifting capacity per desk
- Smooth & quiet adjustment at 38mm per second
- Digital controller with 3 programmable heights
- Anti-collision and anti-tilt safety features
- Height range of 620mm - 1270mm H
- Overall depth of 1500mm
- Available in 1200mm, 1500mm or 1800mm wide
- Available colours -



Boost+ Back to Back with Screen

- All of the features of the Boost+ Back to Back
- 900mm H x 30mm T pinnable privacy screen
- Screens in Black Fabric with White powdercoat extrusion or Grey Fabric with Black extrusion
- Available in 1200mm, 1500mm or 1800mm wide to suit Boost+ Workstations
- Available in other screen heights. Ask us today.



Boost+ Back to Back with Cable Tray

- All of the features of the Boost+ Back to Back
- Fully ducted cable tray with punchout for power & data to be fitted to either external or internal of frame
- Optional cable snake and bridge upgrades available to manage power and data cords to keep your workspace safe and tidy.
- Cable trays available in Black or White to match the workstation frame
- Available in 1200mm, 1500mm or 1800mm wide to suit Boost+ Workstations



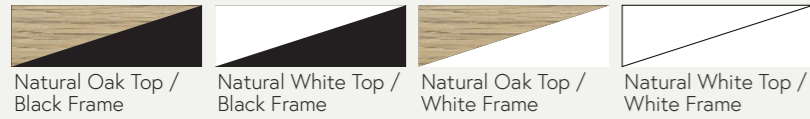
Boost+ Back to Back with Screen & Cable Tray

- All of the features of the Boost+ Back to Back
- Including pinnable privacy screen
- Clearance from Floor to bottom of screen: 425mm
- Including cable tray
- Internal Segregation For Power & Data



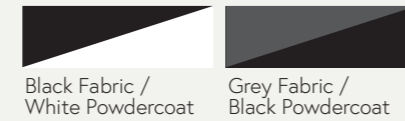
Boost+ Corner

- Corner Workstation for more desk space
- Triple motor - 3 stage motorised legs
- 140kg weight lifting capacity per desk
- Smooth & quiet adjustment at 38mm per second
- Digital controller with 3 programmable heights
- Anti-collision and anti-tilt safety features
- Height range of 620mm - 1270mm H
- Available in 1500x1500mm, 1800x1800mm & 1800x1500mm top sizes
- Available colours -



Boost+ Corner with Screen

- All of the features of the Boost+ Corner
- 900mm H x 30mm T pinnable privacy screen
- Screens in Black Fabric with White powdercoat extrusion or Grey Fabric with Black extrusion
- Available in other screen heights. Ask us today.



Boost+ Corner with Cable Tray

- All of the features of the Boost+ Corner
- Fully ducted cable tray with punchout for power & data to be fitted to either external or internal of frame
- Optional cable snake and bridge upgrades available to manage power and data cords to keep your workspace safe and tidy.
- Cable trays available in Black or White to match the workstation frame



Boost+ Corner with Screen & Cable Tray

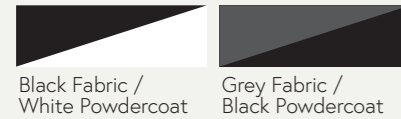
- All of the features of the Boost+ Corner
- Including pinnable privacy screen
- Clearance from Floor to bottom of screen: 425mm
- Including cable tray
- Internal Segregation For Power & Data



SHUSH30+ 900mm Height Screens

- 900mm Height screens used for all BOOST+ configurations
- Comes in 1200mm, 1500mm and 1800mm widths for each corresponding BOOST+ desk
- Also available in a 750mm Return width
- Top rail can be used for hanging accessories
- *Clamps and brackets sold seperately*

Variations :

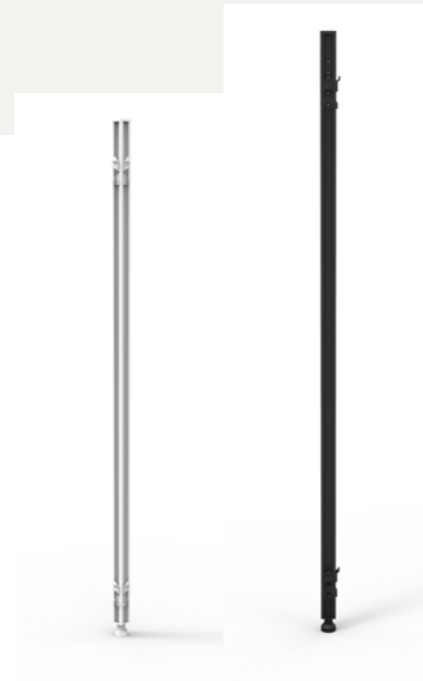


SHUSH30+ Joining Poles

- Shush30+ 360 Degree screen joining poles
- Includes all hooks & cover plates
- Adjustable levelling foot included
- Available in Black or White Powdercoat

Variations :

- SHSJP900 - 900mm H x 30mm W x 30mm D
- SHSJP1330 - 1330mm H x 30mm W x 30mm D



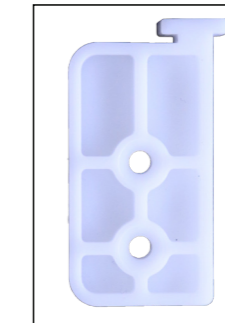
Boost+ with centre dividing screen and return screen

- SHSJP900 used to join return screen to centre screen
- SHSJP1330 used as stabilising pole on end
- Can be used with both Single and Back to Back Workstations
- Add return screen to one or both ends of desk
- Also works with BOOST+ with cable trays
- Desk height can be adjusted without affecting other users or dividing screens
- Can be used between 2 BOOST+ desks



Boost+ with full height SHUSH30+ screen

- The BOOST+ can be used with a full height 1200mm or 1500mm H Shush30+ screen by attaching a nylon glide bracket.
- Works with BOOST+ single sided without screens
- The BR-SLIBR Nylon glide brackets are screwed into workstation tops and fitted to the screen extrusions, this allows smooth adjustment of the workstation while holding the screen steadily in place
- Comes as a set of 2; 1 x Right, 1 x Left



Nylon glide bracket



ADD ON - Cable Snake

- Boost+ Flexi Cable Snake
- 1200mm L x 45mm W x 30mm D
- 4 x Segregation Channels Per Snake
- Available colours -



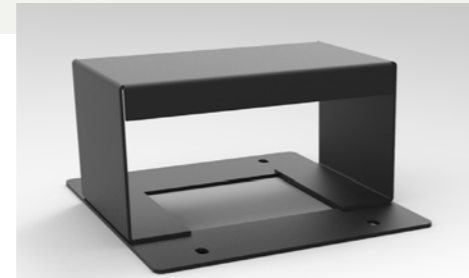
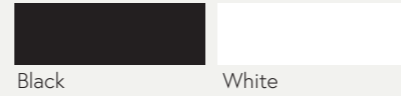
B2-CBSNAKE



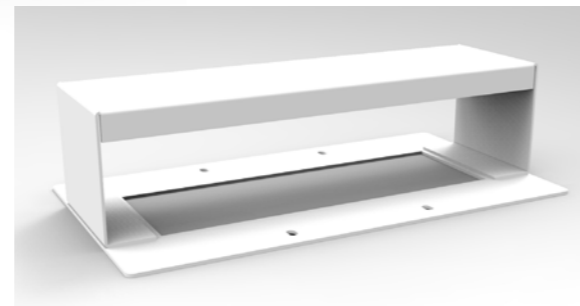
ADD ON - Cable Tray Bridge

- Boost+ Single Sided Workstation Cable Tray Bridge - 100mm W x 175mm D x 94mm H
- Cable Tray Cover to go between two single sided workstation frames
- Allows 30mm gap between users
- Boost+ Back To Back Workstation Cable Tray Bridge - 100mm W x 350mm D x 94mm H
- Cable Tray Cover to go between two back to back workstation frames
- Allows 30mm gap between users

- Available colours -



B2-SSBR



B2-B2BBR

ADD ON - Battery Pack

- Boost+ Battery Pack
- For use on all Boost+ Height Adjustable Workstations that don't have power access
- Includes control box & power charging adapter
- Battery life up to approx. 30 up down cycles before needing to be recharged
- Ideal for education & training room applications



B2-BATT

ADD ON - Bluetooth Control Box

- Boost+ Bluetooth Control Box
- Allows for height adjustment control with smart phone VIA application - only suitable for IOS devices with access to the App Store
- Up/Down Control
- Minimum/Maximum Height Settings



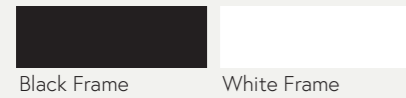
B2-BTCB



Boost+ Single Sided Frame

- Height adjustable frame only
- Telescopic Frame 1100mm W - 1800mm W
- Column Size: 90mm x 60mm
- Foot size of 700mm
- Requires additional arms for cable tray and dividing screen add ons
- Comes with Digital control panel

- Available colours -



B2-SSF



Boost+ Back to Back Frame

- Height adjustable frame only
- Telescopic Frame 1100mm W - 1800mm W
- Column Size: 90mm x 60mm
- Comes with mounting provisions for screens and cable trays
- Comes with Digital control panel

- Available colours -



B2-BTBF



Boost+ Return Frame

- Height Adjustable return workstation frame
- Telescopic frame 735mm W - 1845mm W
- Suits rectangular return table tops & radial 1 piece corner workstation tops
- With overall return edge size of 1450mm - 2150mm
- Foot size of 500mm

- Available colours -



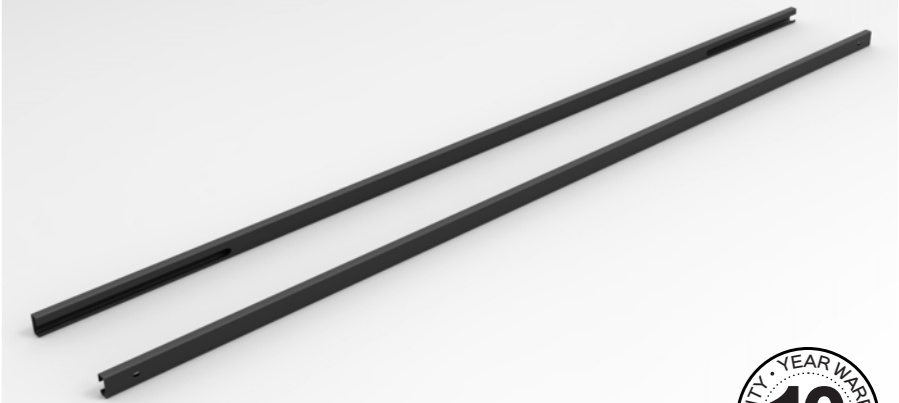
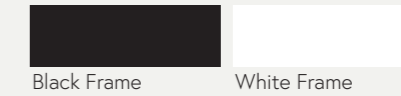
B2-RF



Boost+ Rail Extension

- Boost Plus Rail Extension Beams
- 1600mm W x 30mm H x 15mm D
- 2 Pieces Per Carton
- Suits 2100mm – 2400mm W Workstations

- Available colours -





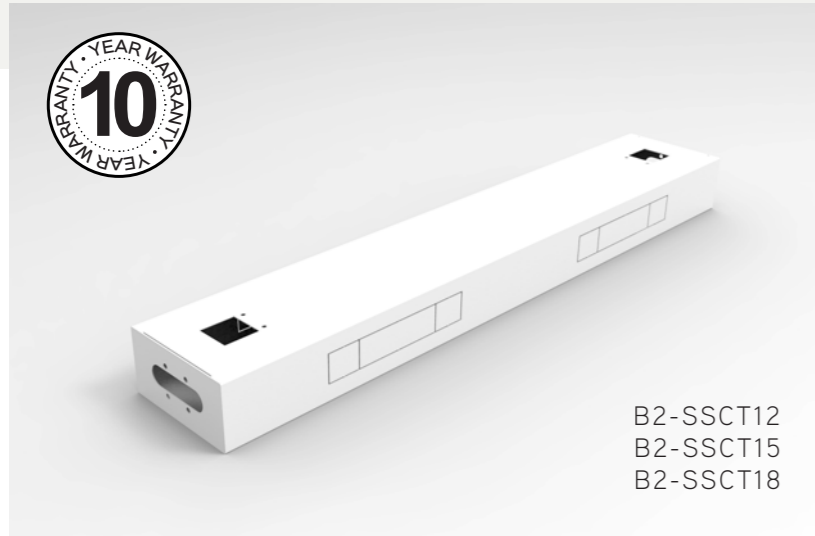
B2-REX



Boost+ Single Sided Cable Tray



- Boost+ Single Sided Workstation Cable Tray
- Internal Segregation For Power & Data
- External & Internal Power & Data Punch Out Provisions
- 4 x External Punchouts at 230mm x 42mm
- 2 x Internal Punchouts at 230mm x 42mm
- Solid Steel Cable Tray Lid With 2 x Access Hole For Boost Plus Cable Snakes
- 175mm D x 90mm H
- 1010mm, 1310mm & 1610mm Widths available

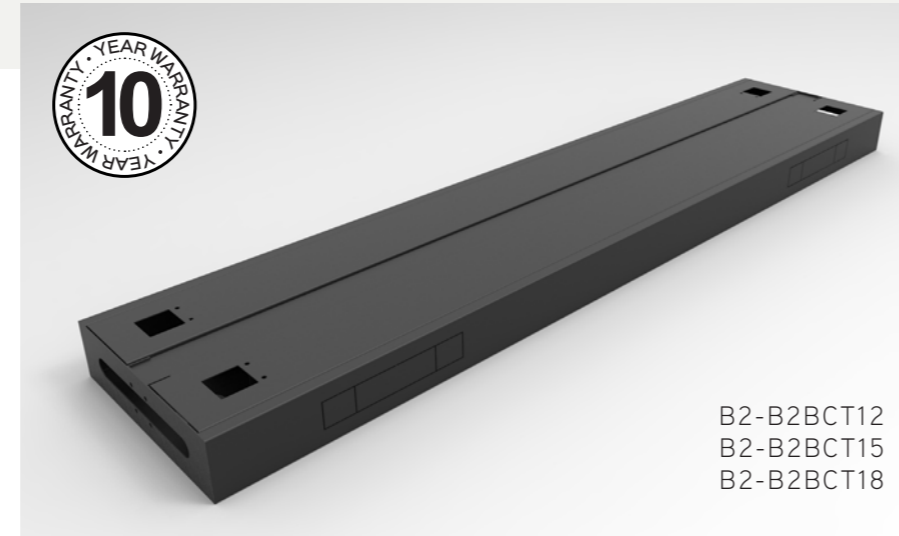
- Available colours -  



Boost+ Back to Back Cable Tray

- Boost+ Back to Back Workstation Cable Tray
- Internal Segregation For Power & Data
- External & Internal Power & Data Punch Out Provisions
- 4 x External Punchouts at 230mm x 42mm
- 4 x Internal Punchouts at 230mm x 42mm
- Solid Steel Cable Tray Lid With 2 x Access Hole For Boost Plus Cable Snakes
- 350mm D x 90mm H
- 1010mm, 1310mm & 1610mm Widths available

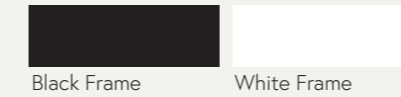
- Available colours -  



Boost+ Single Sided Arm

- Boost+ single sided workstation cable tray & screen mounting arm
- Comes as a set of 2
- 315mm W x 60mm D x 90mm H

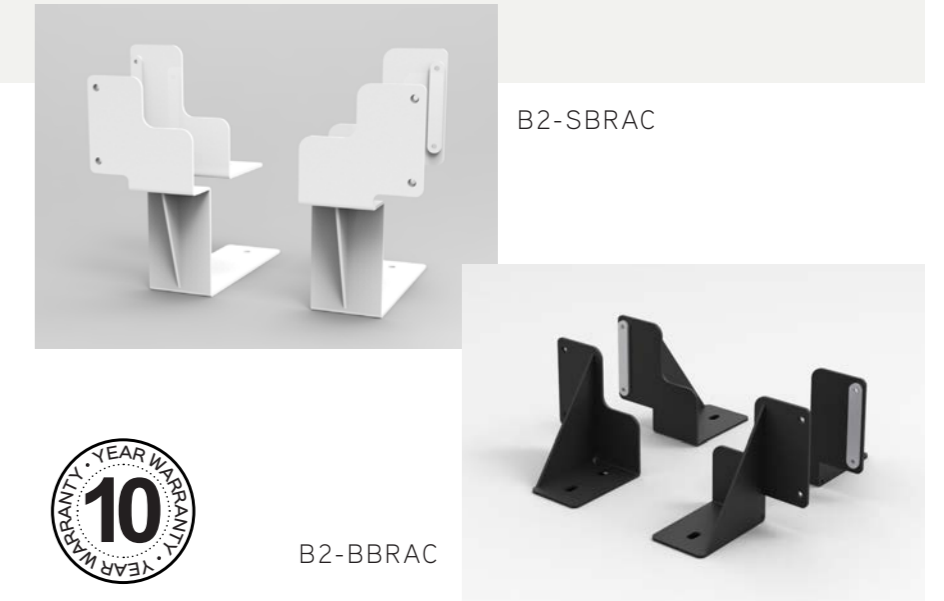
- Available colours -



Boost+ Screen Bracket

- B2-SBRAC : Boost+ single sided workstation screen bracket set
- Set of 2 per carton
- B2-BBRAC : Boost+ back to back workstation screen bracket set
- Set of 4 per carton

- Available colours -





EPIC OFFICE
furniture.com.au