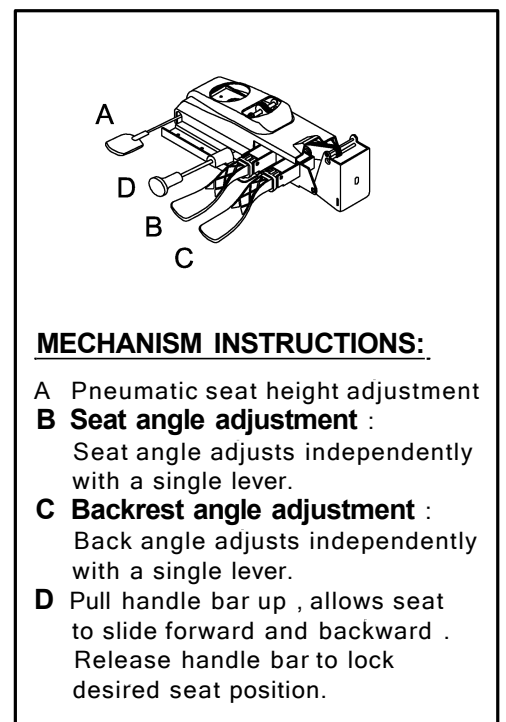
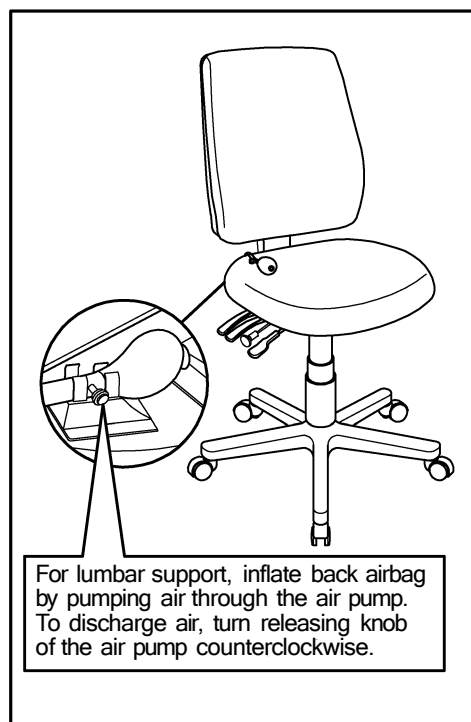
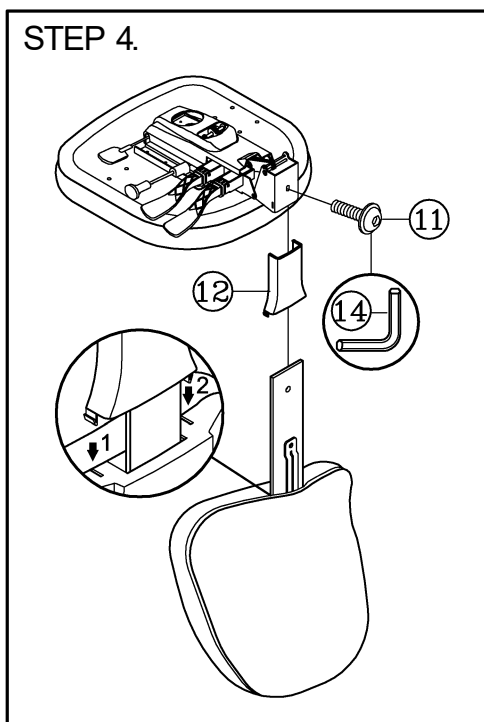
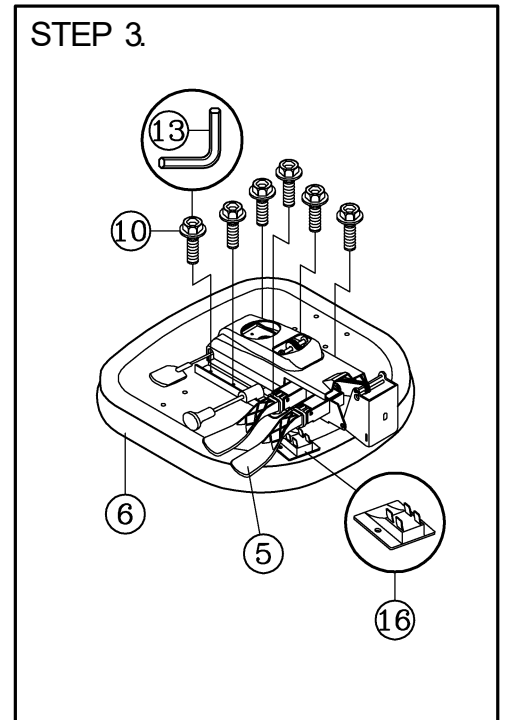
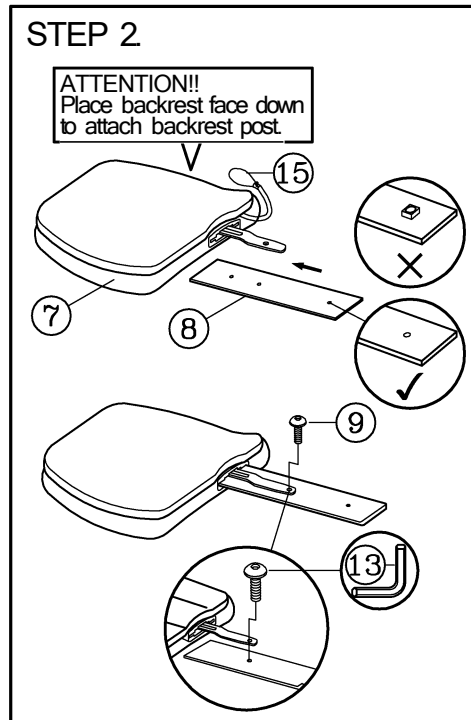
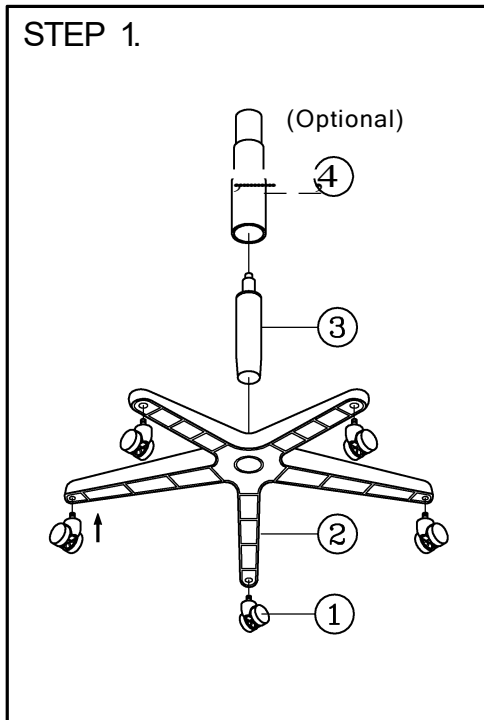


## PARTS LIST

KEY	QTY	DESCRIPTION	KEY	QTY	DESCRIPTION	KEY	QTY	DESCRIPTION
1	5	Caster	7	1	Backrest	13	1	M5 Size Allen Wrench
2	1	Base	8	1	Backrest Post	14	1	M6 Size Allen Wrench
3	1	Seat Post	9	1	Backrest Post Screw	15	1	Air Pump
4	1	Seat Post Cover (Optional)	10	6	Mechanism Screw	16	1	Air Pump Holder (optional)
5	1	Mechanism	11	1	Backr Ticht Bolt	TORQUE SETTINGS TO FX ALL BOLTS: 1.6Nm		
6	1	Seat	12	1	Backrest Bellow			



**ATTENTION**

1. THIS ASSEMBLY INSTRUCTION IS ONLY FOR ASSEMBLING THE CHAIR. THE CHAIR DRAWING MAY BE DIFFERENT FROM CHAIR APPEARANCE.
2. SOME SCREWS MAY PREASSEMBLED, ASSEMBLERS CAN IGNORE THE STEP.
3. REMOVE ALL ITEMS FROM THE CARTON. VERIFY ALL PIECES BEFORE ASSEMBLY.

**PREVENTIVE MAINTENANCE AND WARNING!**

- F ANY PARTS ARE MISSING, BROKEN, DAMAGED OR WORN, STOP USE OF THE PRODUCT UNTIL REPAIRS ARE MADE USING FACTORY AUTHORIZED PARTS.
- DISPOSE OF PACKAGING PROPERLY.
- FAILURE TO FOLLOW THESE WARNINGS COULD RESULT N SERIOUS INJURY.
- EVERY SIX MONTHS, PLEASE MAKE SURE ALL BOLTS, SCREWS AND KNOBS ARE FULLY TIGHTENED TO ENSURE STABILITY.