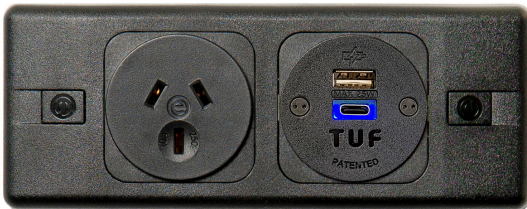


Modular panel-mounted power ideal for any space.

PUMA can be fitted into virtually any panel within a furniture range, from extruded trunking to modesty panels, as well as soft furnishings, and can be specified to meet particular requirements.



Mains power sockets are available for most countries, and OE's award-winning TUF-R USB fast charging provides all the power needed.

Puma comes standard in grey, with other colours being available subject to minimum order quantities.



PLUTO POWER



Two Australia /
New Zealand GPOs



One TUF-R Replacable
USB Charger

Configuration:

Combined (Power & TUF-R USB fast charging).

Features

POWER

PUMA comes with a three pin plug and 2 metre cable.

Rotating cable grips mean the cable can exit via the rear or the side without the need for tools, allowing the PUMA to be mounted in a minimum cavity depth of 30mm.

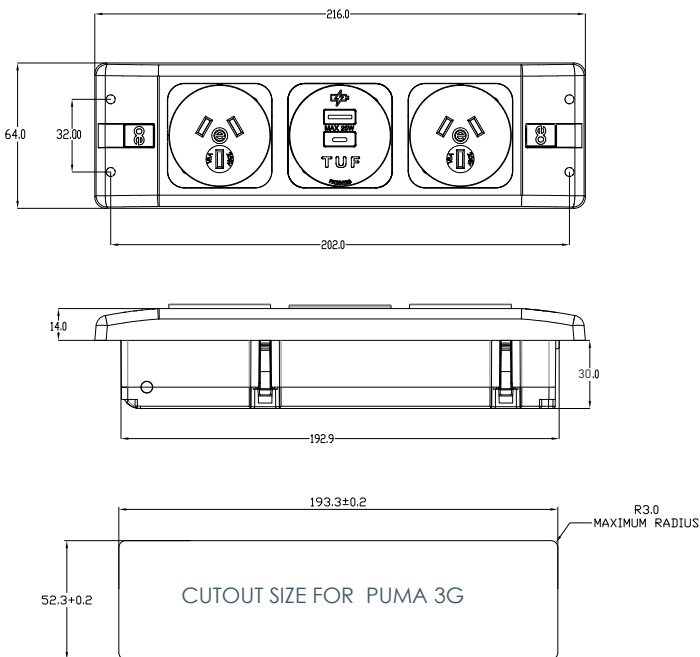
Testing:

100% testing - continuity, polarity, insulation & earth

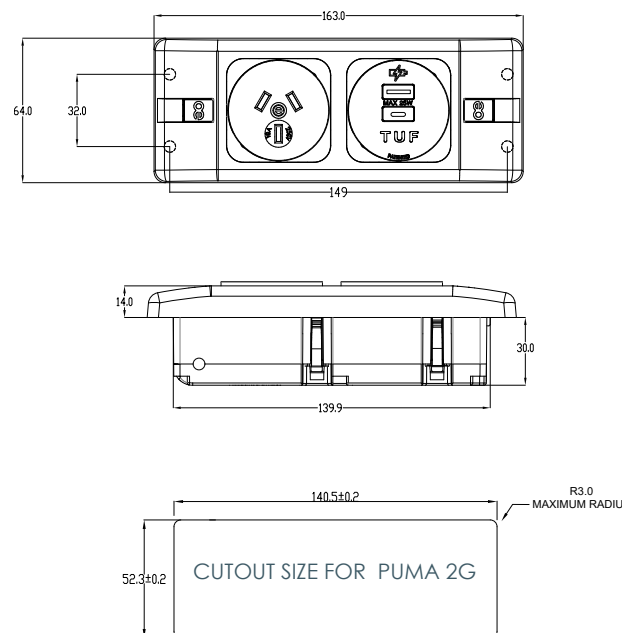
Insulation:

Re-inforced insulation

PUMA 3 dimensions

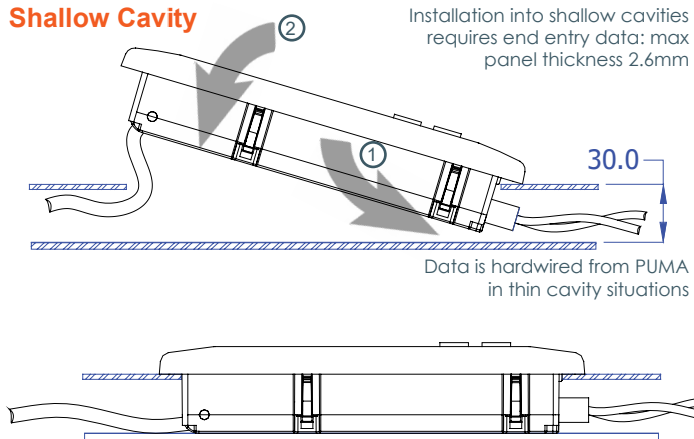


PUMA 2 dimensions



puma INSTALLATION

Shallow Cavity



Deep Cavity

